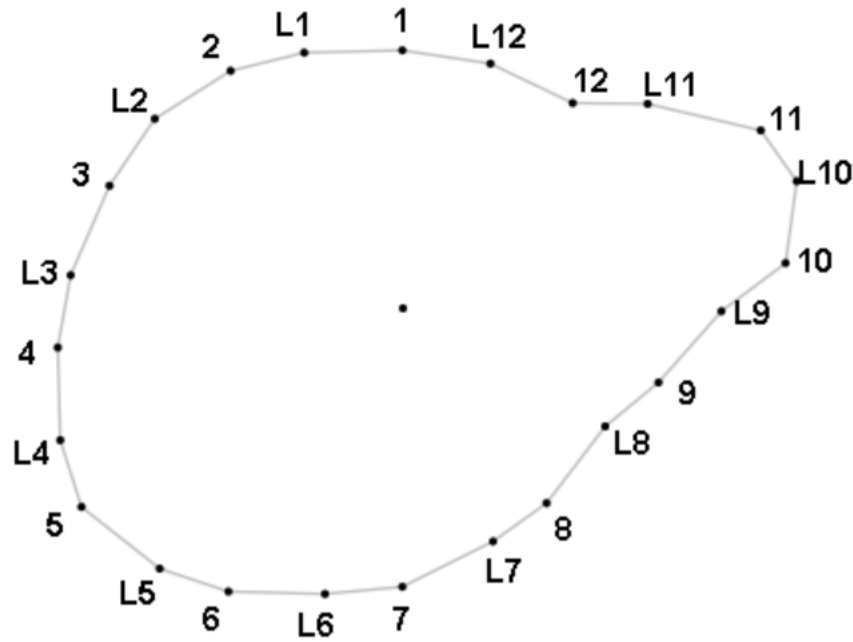
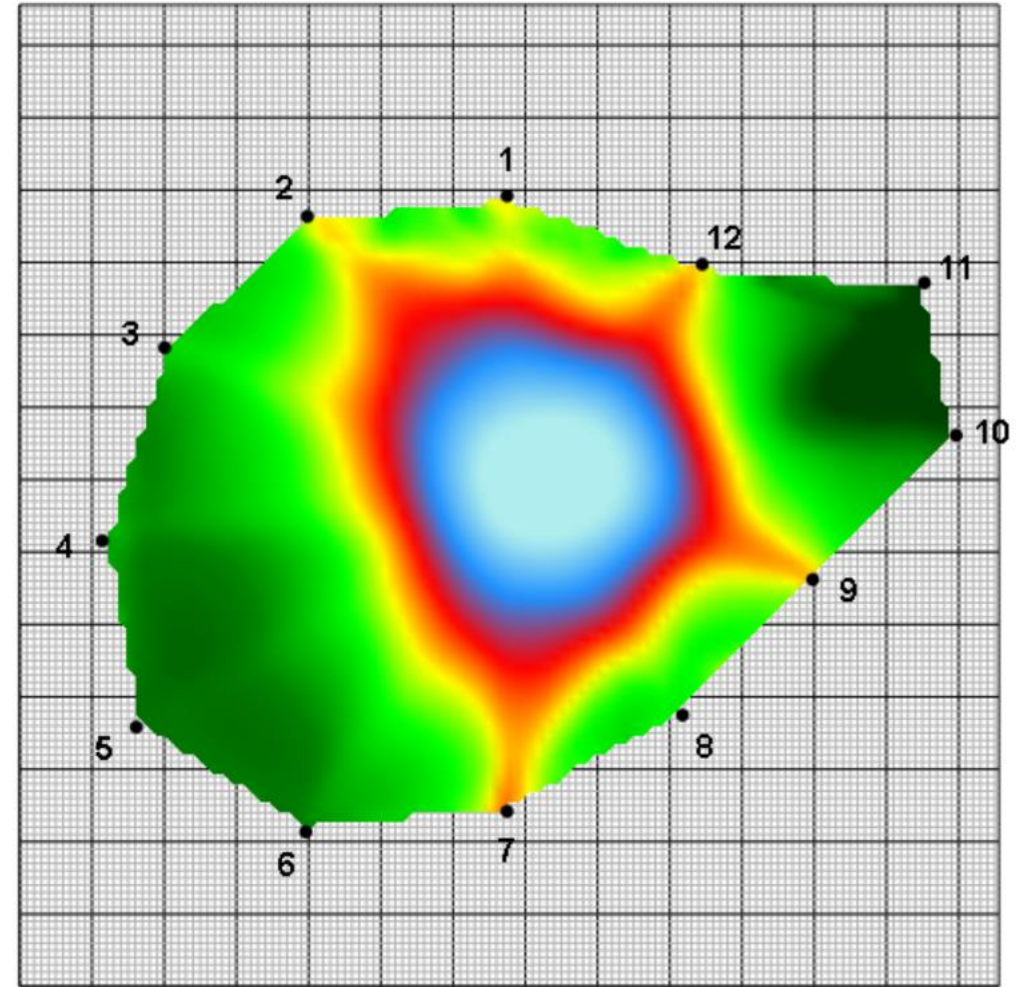
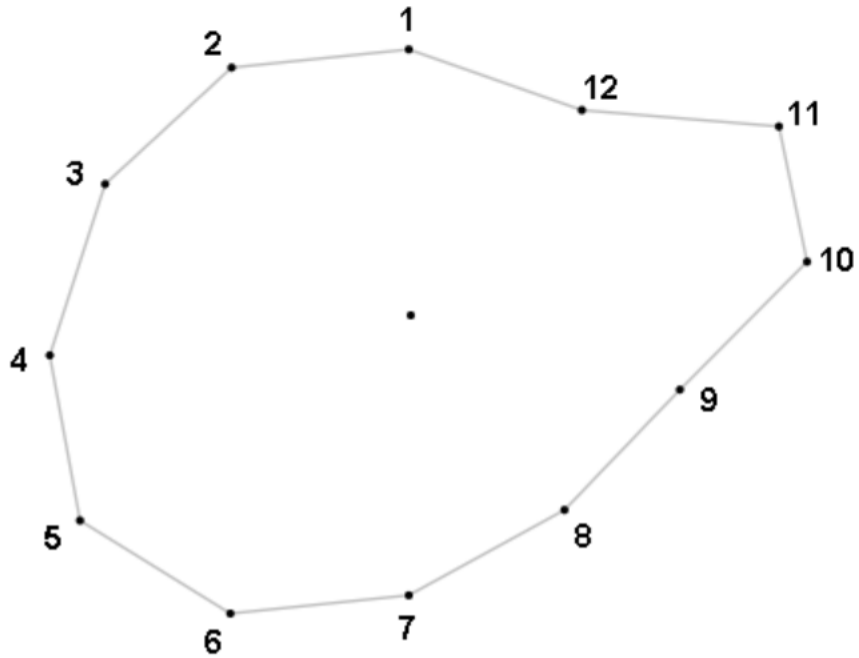


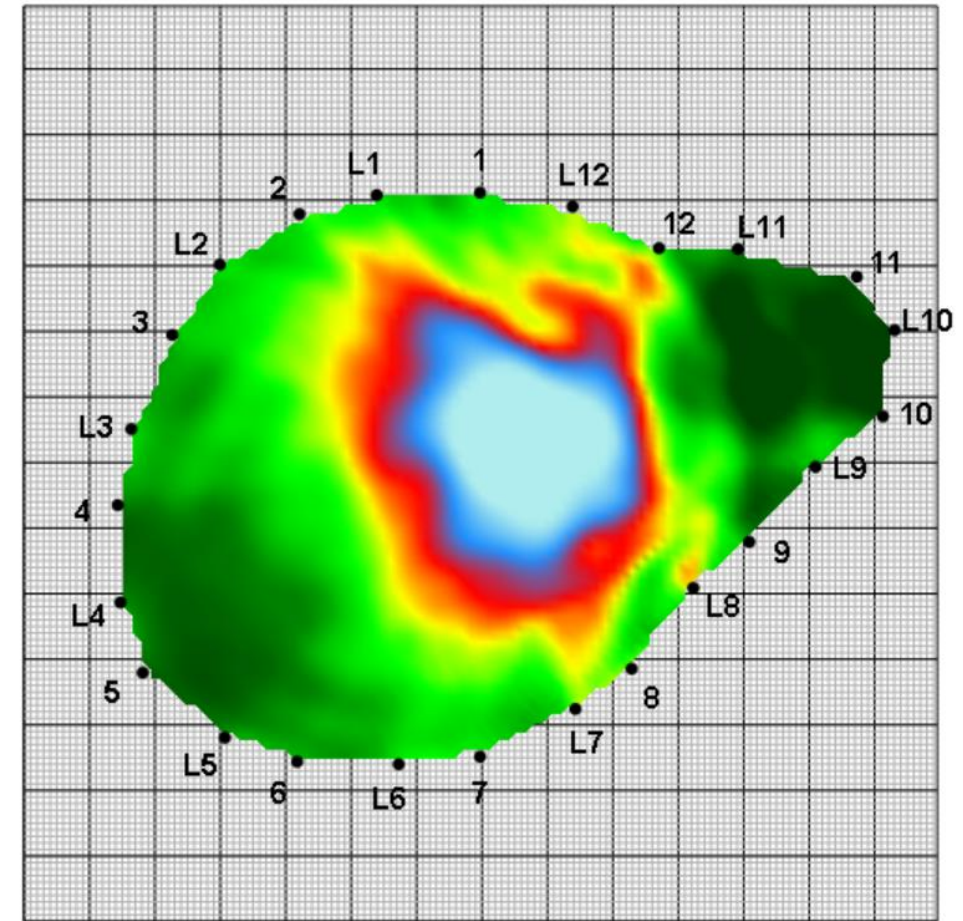
Ludwig sensor test on plane tree with irregular trunk shape



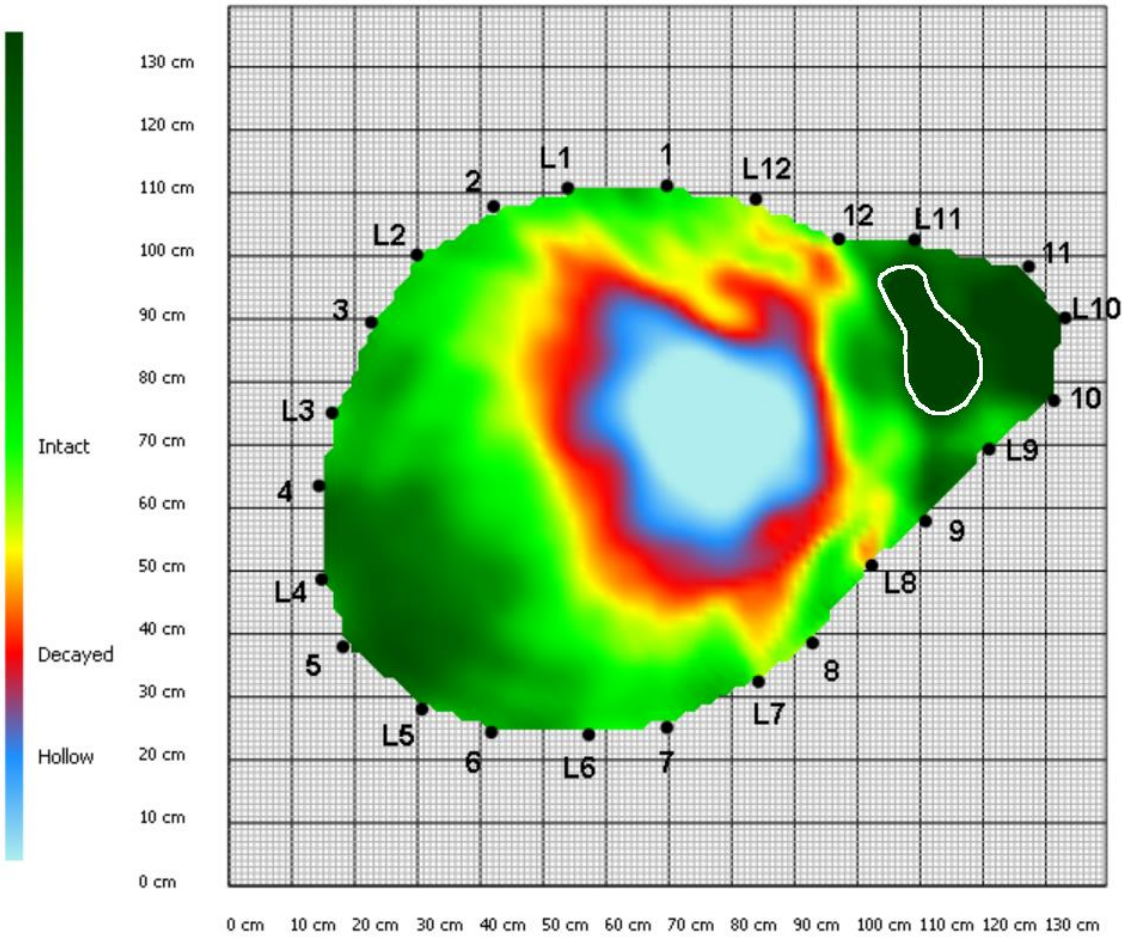
A plane tree was checked in a botanical garden. 12 sensors on their own, and 12 sensors together with 12 Ludwig sensors were used.



The first measurement with 12 sensors showed a decayed area in the middle (about 40%).



The second measurement with 12 sensors and 12 Ludwig sensors showed a decayed area in the middle (about 32%), and also a strengthened area on the side.



The tree had suffered from a freeze and wounded several years ago. This was exactly the part where the strengthened wood was found.